

# **ROSS 2.5**

## **May 2010**

### **Release Notes**

RepliWeb Operations Suite for SharePoint (ROSS) enables organizations to more effectively manage Content and Application lifecycles within SharePoint® environments, resulting in accelerated release cycles and reduced administrative and operating expenses.

ROSS provides selective or comprehensive replication of SharePoint content throughout multi-stage (Development, Staging, and Production) and multi-site (distributed) environments. ROSS manages the deployment / replication of site collections, sites, content, solutions, workflows, structure, look & feel, navigation, features, content types, etc. Recognized for its ability to accelerate deployment timelines, ROSS ensures production readiness of sites and invokes 'best practices' for change control processes.

Agnostic to environment variations, ROSS is a scalable solution built for critical enterprise deployment processes. It includes comprehensive features, such as different synchronization logics, scheduling options, a variety of replication scopes, rollback, recovery and integrity mechanisms, robust APIs, and tools for the delegation of ROSS jobs to task owners.

This ROSS version streamlines and enhances ROSS's deployment operations through Solution Deployment extensions, new Metadata and Contents Filtering capabilities, and control over planned actions through a new Preview feature.

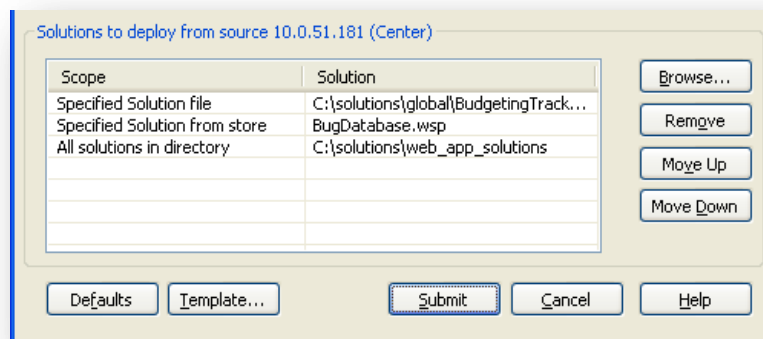
For more information about a particular feature, refer to the *ROSS User Guide*.

## New Features

The following new features have been added to ROSS 2.5:

### Multiple Solutions Deployment

ROSS's Solution Deployment now supports the deployment of multiple solutions in a single job. Administrators can deploy multiple solutions from the local computer and source SharePoint Solutions store, and control the order at which the solutions are deployed.



### Filter Options

ROSS filters provide full control over the content that will be replicated by enabling you to specify which SharePoint contents and entities to include or exclude from the replication.

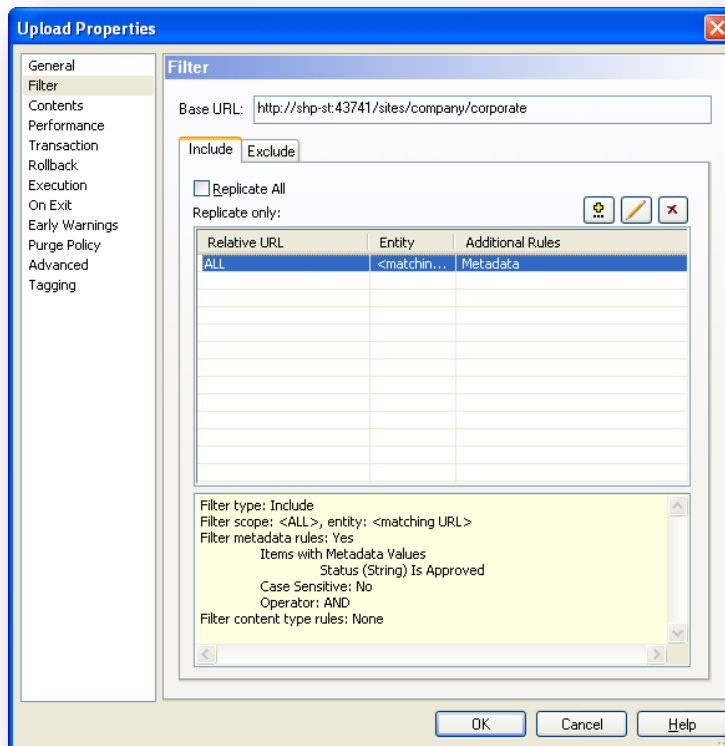
#### Filtering Items by Metadata Values and Content Types

This new capability enables you to define metadata-based rules that indicate whether to include / exclude items in the replication.

In the Filter tab, you can specify include and exclude rules combining entities identified by URL, and items having specific list column (metadata) values or content type names.

This functionality provides improved granularity and helps streamline deployment with process management, as reflected in metadata values.

For example, you can include only items with "Status" metadata having "Approved" value in a given replication, and / or exclude all items created with the "Announcement" content type from the replication of a specific site.

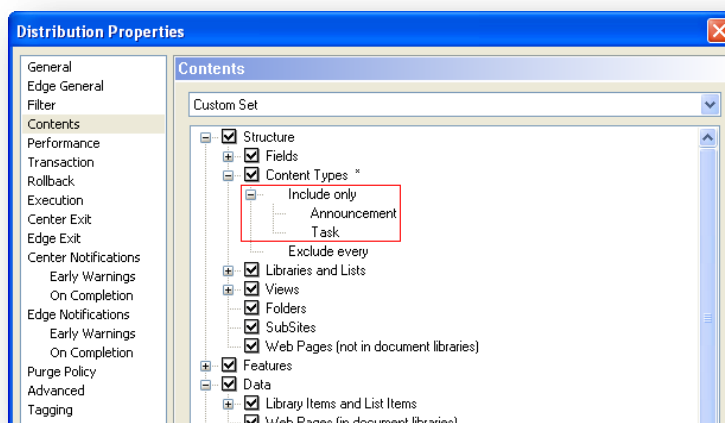


### Filtering Contents by Name

A new “Include only” and “Exclude every” functionality, now available in the Contents tab, provides extra control over the replication of site settings.

Using the Contents tab, you can specify which contents entities to include in or exclude from the replication across the board.

For example, you can specify that content type definitions replication will refer only to “Announcement” and “Task” content types.

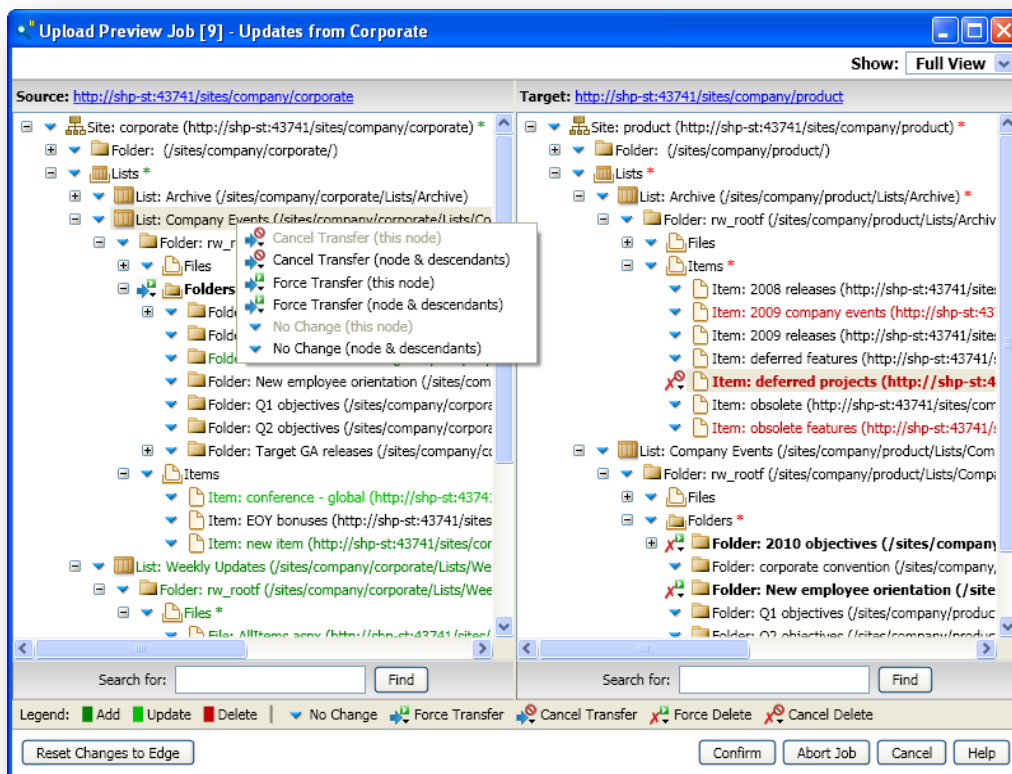


## Job Preview

The Job Preview option provides further insight and user control over the job's replication by enabling authorized users, via ROSS Web UI or Console, to preview the SharePoint content that will be replicated or deleted by the job while it is being executed.

After snapshot analysis, a graphical preview shows the planned content replication actions, enabling you to commit or tune the planned actions before continuing with the job execution.

**NOTE:** To use the Preview option, make sure Microsoft .NET Framework 3.5 SP1 is installed on your ROSS Console.



## Feature Enhancements

The following enhancements have been made to ROSS 2.5:

### Contents Replication

ROSS Contents granularity support has been extended to cover Property Bag as well as the replication of specific permissions (i.e. Permission Levels, Users, Groups, and Site Collection Owners and Administrators).

**NOTE:** The Contents tab also has new SharePoint 2010-related Galleries entries (Solutions and Themes) as a preparation for future SharePoint 2010 support.

### On Exit Processing

To enable further control over notifications, the Email Notification feature has been separated from the On Exit tab and now appears in the On Completion tab, and the Early Warnings feature has been moved from the Recovery Options tab to the Early Warnings tab. These tabs also appear in the Center Management to enable configuring the On Completion and Early Warnings default settings.

### Change Password Utility

The Change Password utility does not require the old password.

### Site to Site Collection Migration

“Migrate Site to Site Collection” replaces the “Site to Site Collection” job scope, this job operates in “Backup” synchronization logic only.

## SharePoint 2010

ROSS 2.5 includes a few internal enhancements made for future SharePoint 2010 support; however SharePoint 2010 replication is not supported in this version.

## Known Issues

The following is a list of known issues with ROSS 2.5:

- When replicating a site collection with site variations, the URL of the variation source site should not contain spaces. If the URL does contain spaces, access to the variation source site URL on the target must be done using its full URL.
- Replication of sites that were created using non-English templates has some limitations. Specifically for French sites; the replication of meeting workspaces is not supported, and Navigation replication requires a target site to exist before replication begins.
- It is not possible to replicate blog, search center, site directory and meeting workspace sites within the same (source and target) site collection.
- The same language packs may need to be installed on source and target.
- The association of personal sites is supported only for personal sites that were created based on personal site templates.
- Tags defined in a hierarchy may show duplicated entries when displayed in the ROSS Web UI's left pane.
- In some scenarios, mainly when creating new sites, the target may show redundant automatically created entities. A subsequent replication will fix this.
- In some scenarios, a few entities may be redundantly replicated to the target. This redundancy is negligible and does not affect target operability.
- For Solution Deployment jobs that are modified to deploy all the solutions in the SharePoint Solutions store, the Source field in the Job Details dialog may only display one solution. This does not affect the actual solution deployment.

## Fixed Issues and Improvements

Fixed issues and improvements in ROSS 2.5 include:

- Site icons, which were replaced prior to replication, would not be replicated to the target.
- In some scenarios, **links** pointing to **entities** that were included in the job's replication scope would not be updated to match their new target URLs.
- Document libraries would sometimes not be replicated with the content types they supported.
- Site URLs would sometimes be parsed inaccurately during rollback.
- The replication of SharePoint calendar events to a site located in a different time zone would cause inaccurate signatures in the target site's **Duration** field.
- Some files that were automatically created by SharePoint during site creation would not be skipped during the replication of a web application's site collections.

- In site collection replications, certain **Top Navigation** nodes would be replicated incorrectly and would appear corrupted in the target.
- Documents in document libraries where the content approval option was checked would be replicated to the target with different **Version** numbers and **Modified** timestamps.
- The handling of redundant replications of certain items, files, and folders to the target.
- Supporting the use of alternate web application URLs, which have been configured in SharePoint's **Alternate access mappings** page.
- SharePoint workflow reports of site collections, which had been replicated with their workflows, would not be available for viewing.
- ROSS Web UI would not include a job's transfer stream reports.
- The Job Details dialog of Solution Deployment jobs would not display the job's stage.

## Prerequisites

It is recommended to install the following prior to ROSS installation and activation:

- MOSS 2007 and WSS 3.0 SP1 (12.0.0.6219)
- [SharePoint Services 3.0 cumulative update package](#) (12.0.0.6327)
- It is recommended to have the same ROSS version installed on all participating Centers / Edges.
- Microsoft .NET Framework 3.5 SP1 is required on the ROSS Console machine for using the new Preview functionality.

####

For any additional information, contact us at [support@repliweb.com](mailto:support@repliweb.com)