

# **RDS v3.1.1 Release Notes**

## **August 2009**

A peer-to-peer file replication and file synchronization solution for heterogeneous computing environments, RepliWeb Directory Synchronization delivers quantifiable improvements to content and application readiness, and it streamlines web operations associated with updates and release cycles.

The 2009 release of the RepliWeb Deployment Synchronization production for v3.1.1 introduces new features and enhancements.

In RDS v3.1.1, administrators can better control their disk space resources by determining the disk space limits for RDS jobs.

The Bulk Changes feature allows making editing changes to the settings and properties of multiple jobs.

A new Reports Pane enables users to view key job reports in the main Console window.

RDS API code samples that demonstrate the usage workflows of the Submit and DoCommand functions are now included in the RDS installation folder.

## New Features

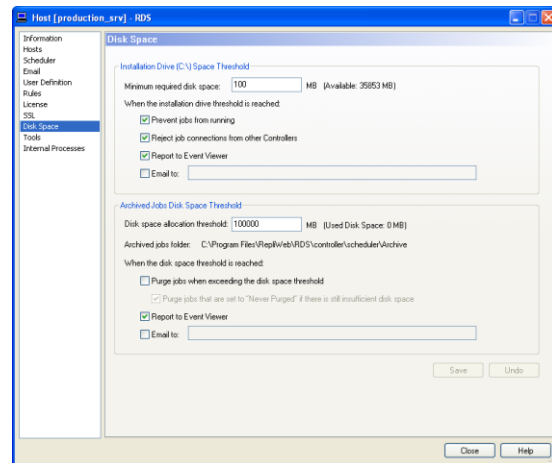
### Disk Space

The Disk Space functionality enables setting the amount of disk space that will be used by RDS jobs. Using this functionality, administrators can control their disk space resources in real time and make sure that their server usage guidelines are met.

#### Disk Space Tab

The Disk Space tab appears in the Center Management dialog and enables limiting the amount of disk space that will be used by RDS jobs, enabling administrators to:

- Set the minimum disk space policy for running RDS jobs on the installation drive.
- Set the disk space usage limit for the archived jobs repository, and to determine the system's behavior in case this threshold is reached.



## Bulk Changes

The Bulk Changes feature extends RDS functionality by allowing the user to update the job definitions of multiple Scheduled jobs through a single operation.

For convenience, each field provides a context menu with additional editing options while fields that are set to undergo changes are indicated with a red asterisk.

The screenshot shows a dialog box titled "Replication Bulk Change (Jobs 4863,4865)". It contains several sections for configuring a replication job:

- Name:** A text input field.
- Description:** A text input field.
- Schedule:** A section with a text box and a "Schedule..." button. Text: "Schedule when you want the job to run. Options include once, continuously, at regular intervals, trigger file, daily or weekly."
- Properties:** A section with a "Properties..." button. Text: "Set the job properties including synchronization logic, transfer engine type, performance, snapshot settings, pre/post commands and permissions."
- Replication Source:**
  - Satellite:** A dropdown menu showing "C:\new\_source\front\_office".
  - Platform:** A dropdown menu showing "< Do not change >".
  - User:** A text input field with "Administrator" and a red asterisk.
  - Password:** A text input field with masked characters and a red asterisk.
  - Domain:** A text input field.
  - Source Directory:** A text input field with a "Browse..." button.
- Replication target on production\_srv (Controller):**
  - Target Directory:** A text input field with a "Browse..." button.

At the bottom, there are buttons for "Defaults", "Template...", "Bulk Change", "Cancel", and "Help".

## Feature Enhancements

### GUI

**Reports Pane** – A new Reports pane extends job viewing capabilities by enabling users to conveniently view key job reports in the main Console window.

### API

**COM API Samples** – RDS COM API code samples of the Submit and DoCommand functions have been added to the RDS installation folder. The samples appear in the following languages: C, C#, VB, VB.NET, and VBScript.

## Fixed Issues

### Scheduled Rollback

The issue with performing rollback on Scheduled jobs has been resolved.

For any additional information, contact us at [support.repliweb.com](http://support.repliweb.com)