

## RDS 3.0.1 – Release Notes April 2008

**RepliWeb Directory Synchronization (RDS)** is a highly robust and scalable cross-platform file replication and directory synchronization solution. Easy to install and manage, RDS offers reliable replication and synchronization of large volumes of files and directories over even the most erratic networks.

The new RDS release offers organizations a streamlined, easily manageable platform. The RDS user experience has been significantly enhanced to enable viewing, browsing and filtering by job tags as well as providing advanced search capabilities.

RDS 3.0.1 also includes RepliWeb's new Large File Accelerator (LFA) which enables organizations to transfer multi-gigabyte files in significantly less time. Beta users have reported that LFA has performed 20% to 60% faster than other transport options with similar results achieved in Lab tests.

### New Capabilities

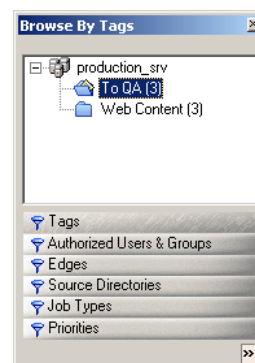
A host of new capabilities make RDS more powerful and easier to manage than ever before.

### Enhanced Management

On-the-fly job modification, job tagging and search/browse capabilities as well as the new Backup and Restore feature ease RDS maintenance and administration.

**Modifying Jobs** – Continuing ease of management improvements, scheduled RDS jobs can now be modified for the next instance without needing to abort the job beforehand.

**Tagging** – RDS 3.0.1 provides clear and intuitive job monitoring and management. Job tagging along with the new browsing capabilities improves job presentation and management, especially when large numbers of jobs are involved such as departmental replication and deployment processes.



**Browse By and Search Panes** – The Console GUI has been enhanced to allow easy navigation between jobs according to various Job properties (including the new Tag property). This facilitates access to specific jobs when there are numerous jobs in the system.

**Backup & Restore** – This RDS release supports Backup and Restore capabilities for RDS Controllers. The Backup process enables RDS administrators to manage scheduled backups of all RDS definitions including configuration files, templates, containers, and more. Using the flexible Restore feature, administrators can choose whether to restore all data or only specific items.

## New Technology

**Large File Accelerator (LFA)** – RDS supports RepliWeb's new large file transfer engine, engineered for efficient transfers of very large files between sites. The LFA transport engine is designed to maximize speed and throughput of large files. LFA benefits businesses that need to transfer large files over non-optimized networks by significantly reducing transfer time. LFA's efficiency has been clearly demonstrated when used to transfer large files such as media files and virtual server backup files.

## Feature Enhancements

**Automatic Rollback** – Rollback has been enhanced to support automatic rollback when the replication process was aborted or ended in error. In addition, for Scheduled and Continuous Updates jobs, administrators can rollback to instances of the job, as well as to any given point-in-time.

**Early Warning** – RDS's notification capabilities now include an "Early Warning" option that enhances job continuity by enabling administrators to resolve any problems *before* the job exhausts its recovery attempts, thus allowing the job to continue uninterrupted. Notifications can be sent by email and/or by reporting to Event Viewer.

**CLI** – The RDS Command Line Interface was enhanced to support ANSI characters in the qualifiers.

**Supported Platforms** – RDS enables replication to/from these additional platforms: Solaris, HP-UX, AIX, Red Hat Linux 64 Bit, Red Hat Linux 7.0 and Red Hat Enterprise Linux 3.0. New to version 3.0.1, RDS also supports Windows Vista as either Controller or Satellite in replication process.

**New Presentation** – Repliweb Products now have new Application Icons and the Start Menu organization was improved for ease of navigation.

For any additional information, contact us at [support.repliweb.com](http://support.repliweb.com)