



# **RDM**

## **RepliWeb Drive Mapper**

# **User Guide**

**Software Version 2.2**

**For Windows operating systems using TCP/IP protocol**

---

RepliWeb, Inc., 6441 Lyons Road, Coconut Creek, FL 33073  
**Tel:** (954) 946-2274, **Fax:** (954) 337-6424  
E-mail: [info@repliweb.com](mailto:info@repliweb.com)

Copyright © 2010 RepliWeb® Inc., All Rights Reserved

The information in this manual has been compiled with care, but RepliWeb, Inc. makes no warranties as to its accuracy or completeness. The software described herein may be changed or enhanced from time to time. This information does not constitute a commitment or representation by RepliWeb and is subject to change without notice. The software described in this document is furnished under license and may be used and/or copied only in accordance with the terms of this license and the End User License Agreement.

No part of this manual may be reproduced or transmitted, in any form, by any means (electronic, photocopying, recording or otherwise) without the express written consent of RepliWeb, Inc.

SharePoint, Windows, and Windows XP are trademarks of Microsoft Corporation in the US and/or other countries.

Any other product or company names referred to in this document may be the trademarks of their respective owners.

**Please direct correspondence or inquiries to:**

RepliWeb, Inc.  
6441 Lyons Road  
Coconut Creek, Florida 33073  
USA

Telephone: (954) 946-2274  
Fax: (954) 337-6424

Technical Support: <http://support.repliweb.com>  
Website: <http://www.repliweb.com>

# Table of Contents

<b>INTRODUCTION .....</b>	<b>1</b>
THE REPLIWEB FAMILY OF PRODUCTS.....	1
REPLIWEB DRIVE MAPPER (RDM) .....	1
ABOUT THE USER GUIDE .....	2
<b>OVERVIEW.....</b>	<b>3</b>
MISSION AND BACKGROUND INFORMATION .....	3
WITH RESPECT TO REPLIWEB REPLICATION SOFTWARE .....	3
ARCHITECTURE .....	4
THE RDM SERVICE .....	4
THE RDM CONFIGURATION FILE.....	4
ACCESSING MAPPED DRIVES .....	5
<b>RDM GRAPHICAL USER INTERFACE (GUI) .....</b>	<b>6</b>
THE DRIVE MENU.....	8
THE SERVICE MENU .....	11
THE VIEW MENU .....	13
THE HELP MENU .....	14
<b>RDM COMMAND LINE INTERFACE (CLI) .....</b>	<b>15</b>
RDM CLI: SERVICE COMMANDS.....	17
<i>Install</i> .....	17
<i>Uninstall</i> .....	18
<i>Stop</i> .....	18
<i>Start</i> .....	18
<i>Restart</i> .....	18
<i>Show</i> .....	19
RDM CLI: DRIVE COMMANDS .....	20
<i>Add</i> .....	20
<i>Modify</i> .....	21
<i>Remove</i> .....	22
<i>Connect</i> .....	22
<i>Disconnect</i> .....	22

# Introduction

## The RepliWeb Family of Products

Helping your IT organization deliver strategic file workflow, content automation and information delivery solutions faster, and more reliably. RepliWeb's software solutions automate, guarantee, and accelerate the delivery of files throughout local and distributed enterprise-computing environments. Installed in some of the most demanding enterprise IT and data center environments, RepliWeb solutions accelerate information availability, deliver improved performance, and reduce costs associated with content-based file workflows.

**RepliWeb Deployment Platform (R-1)** – Automated deployment of web content, IIS 6 Metabase, IIS 7 Configuration, .NET framework and COM+ components to data centers and across local or distributed computing environments.

**RepliWeb Directory Synchronization (RDS)** – A peer-to-peer file replication and file synchronization solution for heterogeneous computing environment (Windows, Linux, UNIX).

**RepliWeb Operational Synchronization for SharePoint (ROSS)** – Deployment solution for SharePoint®-enabled organizations publishing across tiered topologies and multiple farms.

**RepliWeb Managed File Transfer (RMFT)** – A managed file transfer platform that helps organizations automate file workflows and accelerate the way they transfer, share, and exchange files between internal users, customers, and business partners.

A complete list of products and supported platforms can be found at RepliWeb's web site: <http://www.repliweb.com>.

## RepliWeb Drive Mapper (RDM)

The RepliWeb Drive Mapper (RDM) provides an out-of-the-box solution for mapping network drives and devices through the use of background Windows services. Windows drive mapping maps the drives interactively for a network user, rendering them 'invisible' to a process running in the background. RDM allows for other background processes (such as the RepliWeb Deployment Suite) to access the mapped resource while in background operation. If the network drive or device is mapped using normal Windows drive mapping, the background operation would fail as the mapped resource is only available to an interactive user (i.e. a user currently logged on). In the case that no user is actively logged on to the machine, the mapped drive would not even exist. RDM solves the above-mentioned issues and more, allowing mission-critical processes that require the use of mapped drives and devices to proceed unhindered.

## About the User Guide

### Audience

This guide was written with the following in mind:

- The user is familiar with the various Microsoft Windows operating systems (Windows 2000/XP/2003/Vista, and Windows Server 2003/2008 – 32/64-bit Editions) and their basic administration.
- The user has the necessary privileges for the computer(s) on which the software is to be installed. These will be described more fully throughout the User Guide.
- The user is familiar with Windows-style graphical user interfaces (GUI) and / or command line interfaces (CLI).

### User Guide Organization

RDM can be administered indiscriminately through the use of a graphical user interface (GUI), or a Command Line interface (CLI). All actions that can be performed using the GUI can also be performed via Command Line. The respective interfaces simply provide a means of configuring RDM to map the network drives and devices. For this reason, the concepts of Windows drive mapping that are common to both interfaces will be discussed first, followed by separate sections on implementation using both the GUI and CLI.

# Overview

## Mission and Background Information

The purpose of RDM is to provide an out-of-the box solution to easily configure shared network resources as 'background' mapped Windows drives. Although normal Windows drive mapping is sufficient for network users, a mission-critical application running as a background process will not be able to access the mapped drive. RDM was primarily developed to allow users of other RepliWeb products to incorporate shared resources and network storage appliances into content deployment and data replication solutions.

Enterprise applications do not often run as interactive processes that appear on a user's "desktop", but as background processes running as Windows services. They are not typical applications in this sense. Windows services are started as soon as a system is fully booted, and are active regardless of which user is 'logged on' to the machine. In fact, services are already active when the Windows logon screen is displayed. In the case of a data-deployment application such as RDS, it is fundamental to the solution that the replication be able to proceed regardless of whether a user is logged on or not.

Windows maps drives 'interactively', meaning that the drive will only be mapped while a user is logged on to the system. When the user logs off, the drive no longer exists. What would happen to a background application that relies on the mapped drive for content if the user were to log off?

Another issue is that a mission-critical application running in the background (as a service), will not "see" the network drive. This is regardless of whether a user is logged on (and the user can see the drive in Windows Explorer for example) or not.

For a service to "see" the mapped drive it must be mapped in the context of a service - this is done through the RepliWeb Drive Mapper (RDM).

## With Respect to RepliWeb Replication Software

To successfully replicate to or from a mapped drive, the RepliWeb Drive Mapper must be installed and configured on the system that will map the resource. If normal Windows mapping is used to map the drive, the background replication will not be able to access the mapped drive.

## Architecture

When the RepliWeb Drive Mapper service is started, it reads a configuration file specifying which resources should be mapped to which drive letters, and what options to use (i.e. User context, etc.). The configuration file is created and maintained by the RDM GUI and / or RDM CLI. These details are discussed in subsequent sections of the User's Guide.

The user interacts with either of the interfaces (through the RDM GUI, or issuing the respective RDM CLI commands) to automatically create / update the RDM configuration file. Depending on the way the RDM service has been configured, the changes can take place almost immediately, or the next time the RDM service starts.

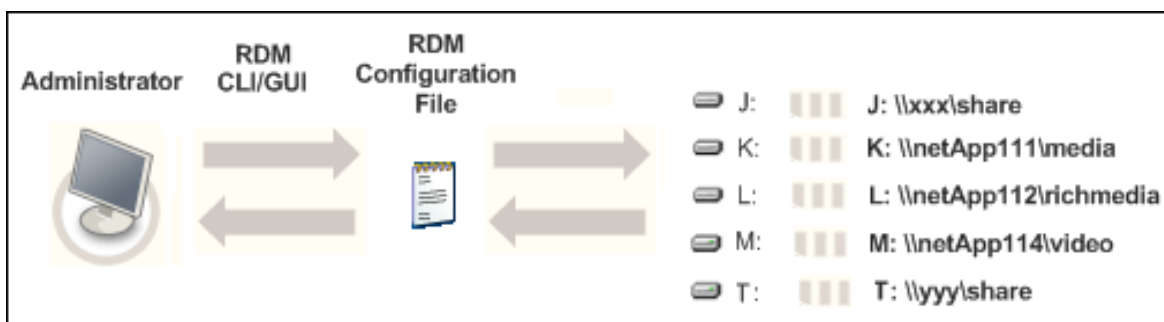


Figure 1: RDM Architecture

## The RDM Service

The RepliWeb Drive Mapper service is the component of RDM that actually performs the drive mapping. To view a list of Windows services, open **Administrative Tools** (through the Control Panel) and double click **Services**. By default, services are run under the privileged user LocalSystem.

Information regarding choosing different user to run the service can be found in the [Service – Install](#) section of this guide.

**NOTE:** Whenever the RDM service is stopped (i.e. for a restart), all mapped resources will be brought down. Thus, ensure no processes are accessing the resource (i.e. no replication jobs are running) whenever the service is stopped.

## The RDM Configuration File

The RDM Configuration file holds all the information needed for RDM to perform the drive mapping. Each drive has a separate section in the configuration file with information ranging from the remote username and password (in encrypted form) necessary to access the shared resource to the last error (if any) encountered when trying to map the drive.

**IMPORTANT:**

The RDM configuration file is a file that is shared by all users on the system. When the RDM service has been started and the drives successfully mapped, all drives mapped using RDM will appear in Windows Explorer regardless of which user is currently logged in. However, access to any of the mapped resources will be denied unless the user currently logged on to the system is the same user whose credentials were used when defining the drive in RDM. This refers to the user field when adding a new drive to RDM.

There is a maximum of twenty six drives (physical and mapped) available to a system, a Windows limitation that must be taken into account when implementing a drive mapping solution.

As previously mentioned, the RDM service reads the RDM configuration file every time the service is started. The configuration file is automatically created and updated by both RDM interfaces (GUI and CLI) whenever they are used to administer the drive mapping.

For configuration changes to be realized, the updated configuration file must be re-read by the RDM service. If the service is set to **Auto Refresh** mode, no restart of the service is necessary. If the service is set to **Manual Refresh** mode, the changes will not be realized until the service has been restarted.

## Accessing Mapped Drives

There are two possible ways a drive mapped using RDM may be accessed. The first deals with an interactive user – a user that is logged on to the system and requires access to the mapped resource. In this case, the user accessing the mapped drive **must be the same user entered in the user field** or the access to the mapped resource will be denied.

The second case deals with a background process accessing the mapped resource. In this case, the user accessing the resource must have the added permission **Log on as a batch job** defined through **Control Panel → Administrative Tools → Local Security Policy**.

### Applied to RepliWeb replication

Since all RepliWeb products operate through background services, the second case is applicable.

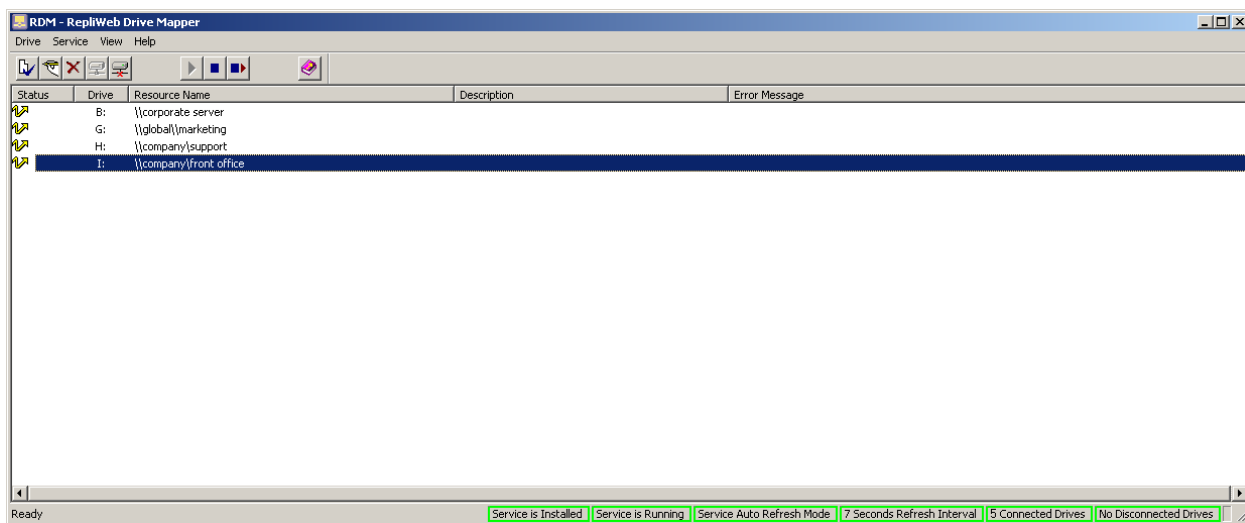
- If the mapped drive is located on the Controller, the Controller user must have the permissions mentioned above. This is the user entered in the Controller connection dialogue box when starting the RDS GUI, or specified using the `-controller_user` qualifier using the RDS CLI.
- If the mapped drive is on the Satellite, the Satellite user must have the permissions mentioned above. This is the user field in the main job definition window.

# RDM Graphical User Interface (GUI)

The RDM GUI is the primary method for the user to configure any resources to be mapped using RDM. Once RDM is installed, the RDM GUI can be started by selecting:

**Start → Programs → RepliWeb RDM → RDM**

Starting the program brings up a graphical user interface that is used to generate and update the RDM configuration file.






**Figure 2: RDM Main window**

The above screenshot is of the RDM GUI upon initial installation. The main window displays no mapped resources; the service is installed and started.

The Status column displays the state the drive is currently in: Status Icon Status Description

Status Icon	Description
	The drive is connected.
	The drive will be connected upon next service restart or refresh. -or- An error has occurred and another attempt will be made to connect on the next service restart.
	The drive will be disconnected on the next service restart or refresh.
	The drive will be deleted on the next service restart or refresh.
	The drive is currently disconnected / disabled by user request.

Status Icon	Description
	The updated drive configuration will take hold on the next service restart or refresh and the drive will be connected.
	The updated drive configuration will take hold on the next service restart or refresh and the drive will remain.
	The drive is defined as awaiting recovery in the system and is not accessible.

- The **Drive** column displays the drive letter the resource has been assigned.
- The **Resource Name** column displays the resource the drive is mapping.
- The **Description** column displays the description assigned to the drive when it was defined.
- The **Error Message** column displays the error message if there was a problem mapping the drive. If the drive was successfully mapped, this field remains empty.

## The Drive Menu

### Drive - New

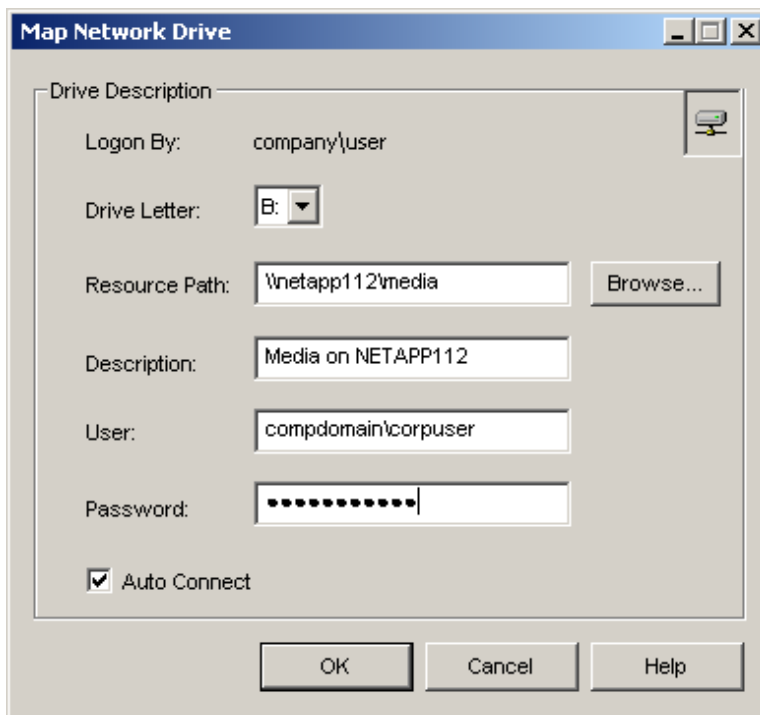


Figure 3: Map Network Drive window

The **Drive - New** command will add a drive to the configuration file. The window that appears requires the user to enter the information necessary to map the resource.

For the mapped drive to be successfully used, the user accessing the mapped drive **must be the same user entered in the user field.**

- **Logon By** – This specifies the user currently logged on to the system. The user that defines the new mapped resource is the “owner”. Although all users that start the RDM GUI will be able to view the resources mapped by others, only the owner of a particular map will be able to modify or delete the map. All other mapped drives will appear “grayed out” in the main window.
- **Drive Letter** – The drive under which the shared resource should be mapped – only available drive letters will appear from the drop-down list.
- **Resource Path** – The resource path to the shared resource – this should be entered using a standard Windows shared resource. The field can be completed automatically by browsing to the shared resource using the Browse button.

[\\resource\\_name\share\\_name](#)

**Example:**

[\\22.123.555.2\media\\_share](#)

[\\media\\_server1\media\\_share](#)

If the resource name is an IP address, it must be resolvable to an IP address. An easy way to check is to open a DOS command prompt and issue: `>ping resource_name`

If the pings are returned, the `resource_name` can be resolved. If an error is reported, there is a problem with the resource name.

For assistance in defining shared resources consult Windows Help.

- **Description** – The description field allows the user to write a description of the shared resource for personal use. This field may be left blank.
- **User** – The user field supplies RDM with a username to access the remote resource. This must be a user that has the necessary rights to connect to the shared resource.

For example: Domain User

`Domain_name\user_name`

For example: Local user

`username`

- **Password** – The password for user.
- **Auto-connect** – When this checkbox is clicked, the drive will automatically be connected the next time the service is restarted. If the box is left unchecked, it will be in a 'disconnected / disabled' state.

This feature may also be accessed by right clicking in the main RDM window.

### Drive - Update

Updates the configuration file for an existing drive. The drive to be modified must be selected in the main window before this menu item is available. Selecting **Update** opens the same window as selecting **New**, however the fields are filled with their last configuration.

This feature may also be accessed by right clicking in the main RDM window.

### Drive - Delete

To delete a mapped drive from the configuration file select the drive in the main window and select **Delete**. The delete must then be confirmed.

This feature may also be accessed by right clicking in the main RDM window and is applicable to multiple drives if they are highlighted.

### Drive - Connect

Sometimes it is necessary for a drive to be properly configured for mapping however put in a “Disconnected” state (see [Drive – Disconnect/Disable](#)). This menu item reconnects a drive that has been previously disconnected or disabled. This feature may also be accessed by right clicking in the main RDM window and is applicable to multiple drives if they are highlighted.

### Drive - Disconnect/Disable

A drive may be disconnected (i.e. unmapped) when the service is still running by choosing this option. To disable a drive, select the drive in the main window and select Disconnect. The drive may be reconnected (re-mapped) by selecting Connect from the Drive menu.

This feature may also be accessed by right-clicking in the main RDM window and is applicable to multiple drives if they are highlighted.

### Drive - Select All

Selects all the drives in the main window.

## The Service Menu

### Service - Install

As mentioned, the RDM service is the component of RDM that actually performs the drive mapping according to the information present in the configuration file. The service is installed by default upon RDM installation. If this option is “grayed out”, it means the service has been installed.

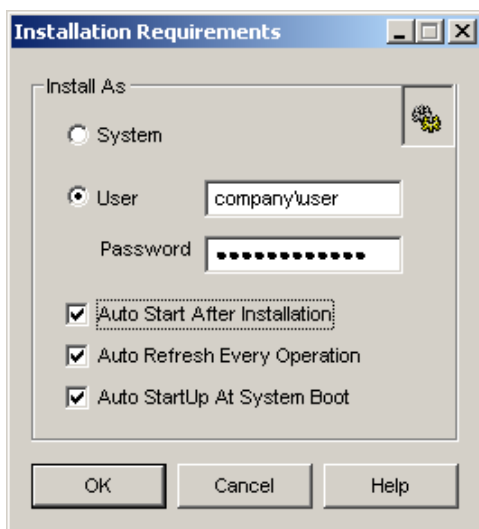


Figure 4: Service Installation window

- **Install As** – A service is run by default as LocalSystem. To run the RDM service under a different account, specify it in the user field. If the user is a domain user, enter the username as [\\domain\\_name\user\\_name](#).

Ensure that the user has the following additional rights, added locally:

- Logon as a service.
- Act as part of operating system.
- Increase quotas.
- Replace a process level token to be assigned locally on the mapping machine.

To avoid permission and access issues, it is highly recommended to install the service as LocalSystem.

For more information regarding the RDM service, see the previous relevant section in this guide.

- **Auto Start After Installation** – Once the service has been installed, it must still be started before any drive mapping can occur. Selecting this option will automatically start the service once it has been installed.
- **Auto Refresh Every Operation** – Before any changes made to the configuration file can be reflected, the RDM service must be refreshed. Under **Auto Refresh**, the service will automatically refresh itself whenever a change is made to the configuration file without disrupting the other mapped drives. When this option is turned off, no changes made to the configuration file will take place until the service is restarted. During the time the RDM service is being restarted none of the mapped drives will be available for other processes.

RDM also has built-in recovery that will automatically attempt to re-establish a connection with a shared resource if it is disconnected due to network issues. This recovery only takes place when **Auth Refresh** is enabled. In the manual refresh mode, any network outages that are repaired will not be reflected in RDM until the service is manually restarted.

- **Auto Startup at System Boot** – Enabling this option will automatically start the service when the system boots up. Deselecting this option means a privileged user will need to manually start the service each time the system is started.

### Service - Uninstall

This feature will uninstall the service. The configuration file will still be preserved so that the service can be reinstalled at a future date and the drives remapped.

### Service - Start

Selecting this option starts the RDM service. The service must be started for any mapping to occur.

### Service - Stop

Selecting this option stops the RDM service. Any drives currently mapped will be unmapped.

### Service - Restart

Selecting this option restarts the RDM service. This is equivalent to stopping and starting the service.

## The View Menu

### View - Toolbar

If checked, the toolbar will be viewable. The toolbar is located directly below the drop-down menus and contains icons for commonly used menu items.



Figure 5: RDM Toolbar

From left to right, the icons are:

**New, Update, Delete, Connect, Disconnect / Disable**  
**Start service, Stop service, Restart service**  
**Help**

### View - Status Bar

The status bar is located at the bottom of the main RDM window. It contains important “at a glance” information such as if the service is installed, started, in “Automatic refresh” mode, the number of drives currently mapped, and the number of disconnected drives.

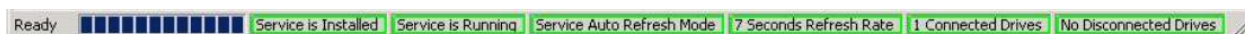


Figure 6: RDM Status Bar

If the service is in **Manual Refresh** mode, the respective indicator appears in red to remind the user to manually restart the service if any changes have been made. This does not indicate that there are any issues with the manual restart.

### View - ToolTip

When this feature is activated, holding the mouse stationary over most icons and fields in RDM will display a ToolTip describing the icon or field’s meaning. For more detailed explanations and descriptions, consult the documentation or on-line help.

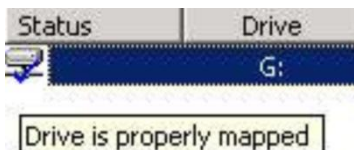
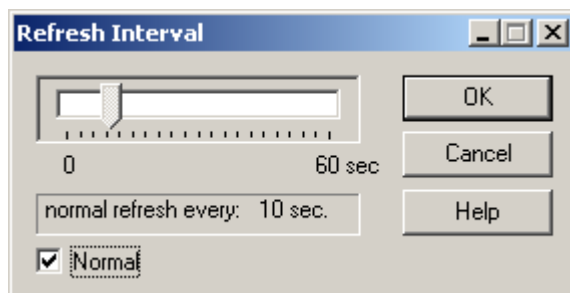


Figure 7: Sample ToolTip

## View - Refresh Interval



**Figure 8: Refresh Interval**

The RDM GUI operates by reading and displaying the configuration file in graphical format. In the same way that any changes made to the configuration file are not reflected in the mapped drives until the service is restarted, any changes to the configuration file or updates to mapped drives are not reflected in the RDM GUI until it has re-read the configuration file. The default value is every ten (10) seconds, however it can be modified by sliding the slide bar to a different value between zero (0) and sixty (60) seconds.

**NOTE:** The window can be manually refreshed by pressing the [F5] key, or right clicking the main window and selecting **Refresh**.

## The Help Menu

### Help – Help Topics

Displays the online help.

### Help – About RDM

Displays RDM Version and Copyright information.

# RDM Command Line Interface (CLI)

The RepliWeb Drive Mapper command line interface allows all of the functionality of the graphical user interface (GUI) available through a command prompt. The RDM CLI operates under the same premise as the RDM GUI. Each command issues updates to the RDM Configuration file. The changes will be reflected upon the next automatic or manual refresh of the RDM service.

Since both interfaces work with the same configuration file, any changes to the configuration file made through the CLI are reflected through the GUI, and vice versa. The two interfaces may be used independently or hand-in-hand, as the solution requires.

It is recommended that the user be familiar with the operation of the RDM GUI before attempting to use the CLI.

All RDM CLI commands are issued using the `mapper` executable from a command prompt window.

## Example:

Issuing a `mapper` command without any parameters leads to a help menu with all commands and their usage.

```
C:\Program Files\RepliWeb\RDM\Bin>mapper
CLI-E-EMPSTR, empty string was passed to CLI
Usage :
-----
Service manipulations:
  Mapper install [-user=james -pass=12345 -[no]auto_refresh]
  Mapper uninstall
  Mapper stop
  Mapper start
  mapper restart
  Mapper show
Drive manipulations:
  Mapper add -drive_letter=x: -resource=\\xxx\yy -user=james -pass=12345
             [-[no]connect -restart]
  Mapper modify -old_drive_lerrer=x: -new_drive_lerrer=x: -resource=\\xxx\yy
               -user=james -pass=12345 [-[no]connect -restart]
  Mapper remove -drive_lerrer=x: [-restart]
  Mapper_connect -drive_lerrer-x: [-restart]
  Mapper_disconnect -drive_letter=x: [-restart]
Other manipulations:
  Mapper help
  Mapper show
RepliWeb Drive Mapper service is installed
RepliWeb Drive Mapper service is running
RepliWeb Drive Mapper service is auto refreshed
RepliWeb Mapped Drives :
Available Letters for Mapping:
```

```
[B:] [E:] [F:] [G:] [H:] [J:] [K:] [L:] [M:] [N:] [O:] [P:] [Q:] [R:] [S:]  
[U:] [V:] [W:] [X:] [Y:] [Z:]
```

An RDM CLI command is structured as follows:

```
>mapper <command> [-qualifier] [-qualifier] [parameter]
```

The `<command>` verb defines the requested action (install, uninstall, stop, start, restart, show, add, modify, remove, connect, disconnect).

Most commands must be accompanied with qualifiers. Qualifiers in square brackets are deemed optional. If they are not present, the default qualifiers will be used.

**Example:**

The following installs the RDM service under the default LocalSystem account with manual service restart. Specifying a user and password would install the service under the specified username:

```
>mapper install
```

Some qualifiers can be negated. These qualifiers have a `-[no]` in front of them.

The `-connect` qualifier will automatically connect the drive once the command has been issued. The negated `-noconnect` would put the drive in the disconnected state.

## RDM CLI: Service Commands

### Install

The `install` command installs the RDM service.

- `-user=User`

The user to install the service under. If the user is a domain user, it should be entered using the `domain\user` format. If this qualifier, and the accompanying `-pass` qualifier are omitted, the `LocalSystem` account is used.

Ensure that the user has the following additional rights, added locally:

- Logon as a service
- Act as part of operating system
- Increase Quotas
- Replace a process level token to be assigned locally on the mapping machine.

- `-password=PASS`

The password for the above `-user`.

- `-[no]auto_start`

Once the service has been installed, it must still be started before any drive mapping can occur. Selecting this option will automatically start the service once it has been installed.

The default is `-noauto_start`.

- `-[no]auto_refresh`

As has been stressed, any changes made to the configuration file will not take place until the RDM service has been restarted. Selecting this feature will automatically restart the service whenever a change is made to an existing drive, or a drive is added, deleted, disconnected, or connected.

**NOTE:** When this option is selected, any changes made will take effect immediately, meaning that processes accessing the mapped resources will be disrupted. If this option is deselected, no changes will take place until the user manually restarts the service.

The default is `-auto_refresh`.

### Example:

```
>mapper install -auto_start -auto_refresh
```

## Uninstall

Uninstalls the RDM service.

**Example:**

```
>mapper install  
Drive Mapping service was successfully uninstalled
```

## Stop

Stops the RDM service.

**Example:**

```
>mapper stop  
Drive Mapping service was successfully stopped
```

## Start

Starts the RDM service.

**Example:**

```
>mapper start  
Drive Mapping service was successfully started
```

## Restart

Restarts the RDM service.

**Example:**

```
>mapper restart  
Service was successfully restarted.  
RepliWeb Drive Mapping service was successfully restarted
```

## Show

Shows all information relating to drives the RDM service is mapping and the status of the service itself.

### Example:

```
RepliWeb Drive Mapper service is installed
RepliWeb Drive Mapper service is running
RepliWeb Drive Mapper service is auto refreshed
RepliWeb Mapped Drives :

\james : [G:] -> \\NetApp111\Media disabled by request

\james : [S:] -> \\NetApp111\Rich_media successfully mapped

Available Letters for Mapping:
[B:] [E:] [F:] [G:] [H:] [J:] [K:] [L:] [M:] [N:] [O:] [P:] [Q:] [R:] [S:]
[U:] [V:] [W:] [X:] [Y:] [Z:]
```

The command shows that the service is installed, running and operating under auto-refresh mode. Thus when commands are issued there is no need to manually restart the service. The command also displays the mapped drives. The first column shows the user that 'owns' the drive mapping. Only user **\james** may alter the maps on drives **G:** and **S:**.

The first drive has been disabled by request, while the second is successfully mapped. The command also lists the remaining drive letters available.

Any existing errors will appear after the drive's state descriptions.

## RDM CLI: Drive Commands

### Add

The `add` command adds a drive to the configuration file.

- `-drive_letter=x:`

The drive the network resource should be mapped under. The colon may be omitted.

- `-resource=\\resource_name\share_name`

This should be entered using standard Windows shared resource. If the resource name is an IP address, it must be resolvable to an IP address. An easy way to check is to open a DOS command prompt and issue:

#### Example:

```
>ping resource_name
```

If the pings are returned, the `resource_name` can be resolved, if an error is reported, there is a problem with the resource name.

For assistance in defining shared resources, refer to Windows Help.

- `-user=user_name`

The user field supplies RDM with a username to access the remote resource. This must be a user that has the necessary rights to connect to the shared resource.

#### Examples:

```
Domain User: Domain_name\user_name  
Local user: username
```

- `-password`

The password for user.

- `-[no]connect`

Connect the drive automatically when the service is restarted.

- `-restart`

Restart the service after adding the drive to the configuration file.

- `-description="enter description here"`

A short description to describe the map. This qualifier is optional. Although the description will not be seen from the CLI, it will be viewable from the GUI.

### Example:

```
>mapper add -drive_letter=u: -resource=\\NetApp114\video -user=acme\john -  
password=12345 -connect -restart  
Service successfully restarted.  
Drive was successfully added to the configuration file
```

## Modify

The `modify` command modifies a drive's configuration settings, the command may be used to change a drive's drive letter, in which case both the old and new drive letter qualifiers must be specified.

**To modify another aspect of a drive** such as a resource, username or password, simply use the `-new_drive_letter` qualifier. This identifies the drive that the modifications should apply to.

- `-old_drive_letter=x:`

The drive the network resource is currently mapped to.

- `-new_drive_letter=y:`

The new drive the network resource should be mapped to.

The remaining qualifiers are identical to the `add` command and are used to modify that aspect of the map.

For example, specifying `-resource=\\newApp\share` will overwrite the existing resource field with the value `\\newApp\share`.

## Remove

The `remove` command removes a drive and its configuration settings from the configuration file.

- `-drive_letter=x:`

The drive to remove from the configuration file.

- `-restart`

Restart the RDM service after removing the drive from the configuration file.

## Connect

Sometimes it is necessary for a drive to be properly configured for mapping however put in a “Disconnected” state (See [Drive – Disconnect/Disable](#)). The `connect` command connects a drive that has been previously disconnected or disabled.

- `-drive_letter=x:`

The drive to connect.

- `-restart`

Restart the RDM service after connecting the drive so the updated configuration file is read.

## Disconnect

Sometimes it is necessary for a drive to be properly configured for mapping, however not to be mapped although the service is installed and started.

- `-drive_letter=x:`

The drive to connect.

- `-restart`

Restart the RDM service after disconnecting the drive so the updated configuration file is read.