

R-1 v4.1 Release Notes

February 2009

RepliWeb Deployment is the industry-recognized web deployment and content replication solution. Installed in over one thousand organizations, RepliWeb Deployment delivers quantifiable improvements to content and application readiness, and it streamlines web operations associated with updates and release cycles.

The 2009 release of RepliWeb Deployment v4.1 introduces exciting new features for both R-1 administrators and R-1 end users.

R-1 v4.1 provides a native 64-bit application for Windows platforms (Windows XP, Windows Vista, Server 2003 and Server 2008), and has expanded its IIS deployment to support IIS7 configuration replication.

A new Object-Oriented API for PowerShell is now available, enabling IT professionals to achieve greater control and productivity by operating R-1 in their administrators' scripts and in-house applications.

This R-1 version introduces a new Web UI (Web User Interface). The new Web UI simplifies the reviewing of jobs by offering more intuitive navigation, enhanced organization capabilities and improved deployment delegation to authorized users.

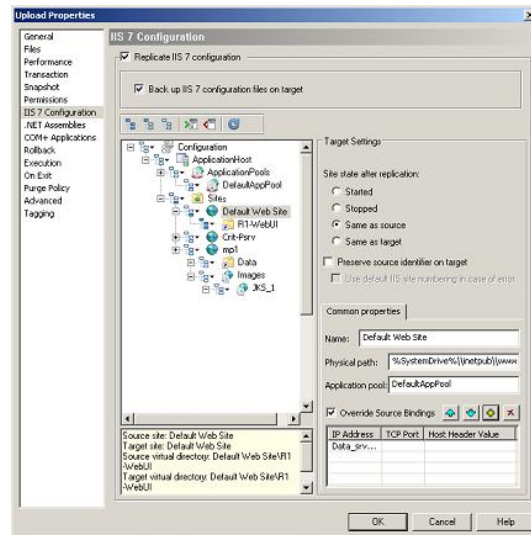
New Features

IIS 7 Configuration Replication

R-1 v4.1 introduces a new replication type for replicating IIS 7 configuration.

Organizations upgrading or adopting Windows Server 2008 and/or IIS 7 can now look to R-1 to ensure content and site readiness. IIS 7 configuration replication capabilities include:

- Deployment and replication of multiple or granular IIS 7 items, such as ApplicationPools, Sites, Applications and Virtual Directories.
- Overriding common IIS 7 item properties on the target.
- Replicating FTP sites to ensure complete deployment of all web assets.
- Backing up IIS 7 configuration settings on the target prior to replication (enabling restoration if needed).
- IIS 7 configuration rollback – undoing the effects of multiple IIS 7 replications on the target to a specific ‘point-in-time’. In cases of erroneous or indeliberate replications, administrators can rapidly roll back IIS 7 configurations throughout the web farm or data center.



64-bit Native Application on Windows Platforms

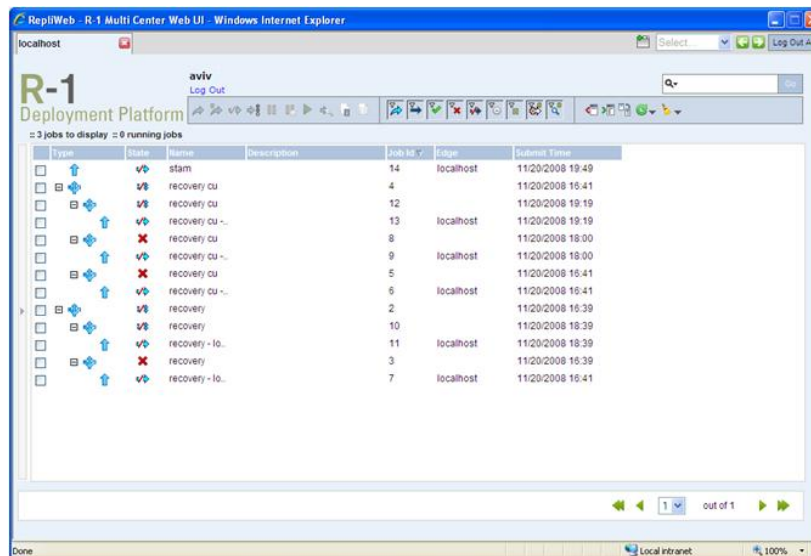
R-1 v4.1 is a native 64-bit application and supports 64-bit editions of Microsoft Windows Servers (Windows Server 2003 and Windows Server 2008).

New Web User Interface

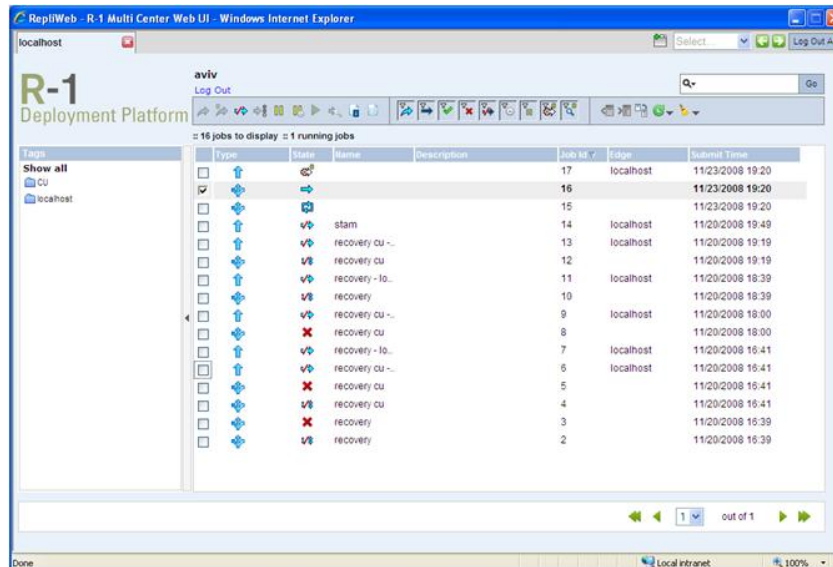
The R-1 Web UI enables non-privileged users, such as application developers and content authors, to launch pre-configured jobs that were created by the R-1 administrator.

R-1's new Web UI for v4.1 includes:

- A new user interface providing users with intuitive orientation within their delegated R-1 deployment jobs.
- Two different jobs list views:
 - **Hierarchical view** for easy job orientation. Jobs are organized in a tree structure, and displayed in the context of parent job and level.



- **Flat view** for advanced sorting and searching capabilities; in Flat view, all jobs in the system (including all levels) are displayed in one flat list.



- Ease job reviewing by exposing the last spawned child job's information for scheduled jobs.
- Enhanced configuration options, various properties of the Web UI can be effortlessly customized to accommodate the organization's "image" and business processes.
- The Web UI is supported in the following web servers: Apache, IIS 6 and IIS 7.
- The Web UI can be used with the following browsers: IE6, IE7, FireFox 2 and above, and Safari 3.1.2 and above.

If required, Advanced_WebUI (R-1 WebUI provided in v4.0.1) will be included in this version and installed as part of the samples package.

PowerShell API

PowerShell is growing in popularity and utilization. To keep with this growing trend, RepliWeb now offers an R-1 API for PowerShell. This API is an Object-Oriented scripting API that allows IT professionals to more easily control system administration and accelerate automation, thus improving efficiency and productivity. R-1 API for PowerShell allows users to submit, monitor and control replication and distribution jobs throughout their lifecycle.

Feature Enhancements

IIS6 Metabase Replication

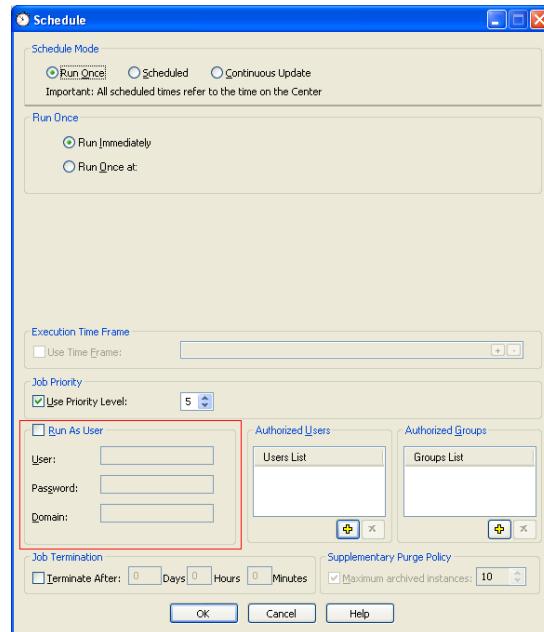
Backup Synchronization Logic – IIS 6 Metabase replication now allows replication in Backup synchronization logic. Backup synchronization logic maintains IIS 6 Metabase attributes on the target, enabling flexible deployment management of machine-specific attributes.

Override Application Pool Identity – R-1 enables overriding the application pool identity in IIS 6 application pool replication. This enables the user to maintain different identities for the replicated application pool, on the source and on the target.

.Net Assemblies Replication – R-1 now provides Mirror synchronization logic for .Net assembly replication. Using this logic, .Net assemblies listed in the replication list will be added, updated, or removed according to their existence on the source.

Bulk Operations – R-1 enables the user to select multiple jobs and perform a selected bulk operation upon all of them via the console. The enabled bulk operations include: Submit, Commit, and Confirm.

Run As User – R-1 exposes a set of credentials, for user definition, under which the job will be executed on the Center. The Run As User option enables the usage of three different roles in a job’s life: the user who is defining the job, the user who is executing the job (the “Run As User”), and the demanding user. In addition, where applicable, the job log now includes the creating user, the demanding user and the Run As User. This enhancement provides administrators with additional flexibility and auditing capabilities by managing user actions that are related to the job in its different life stages.



Coexistence

R-1 supports coexistence with other Repliweb products, such as RepliWeb Managed File Transfer (RMFT) and RepliWeb Operational Synchronization for SharePoint (ROSS).

Pre Requisites

IIS7 Configuration Replication – To replicate IIS 7 configuration settings using R-1, IIS 7 should be installed on both the Center and the Edge(s). Additionally, on Windows Vista, IIS 7 Configuration requires SP 1 or higher.

Web UI – To use the R-1 v4.1 Web UI, all connected Centers should be upgraded to use R-1 v4.1.

Known Issues

On UNIX machines, in order to configure the R-1 Web UI after an upgrade or a fresh installation in environments where libxml is not installed, you should create a symbolic link:

```
n -s </install_path/>repliweb/rds/common/rw_libxml /usr/lib/<lib name>
```

where the `lib name` depends on the platform:

Linux: libxml2.so.2
Solaris: libxml2.so.2
Aix: libxml2.a
HP-UX: libxml2.sl
HP-Itanium: libxml2.so.8

For any additional information, contact us at support.repliweb.com